



CDSS

WILL LIGHTBOURNE  
DIRECTOR



OFFICE OF TRIBAL AFFAIRS  
CALIFORNIA DEPARTMENT OF SOCIAL SERVICES

# CDSS: How California's Child Welfare System Works

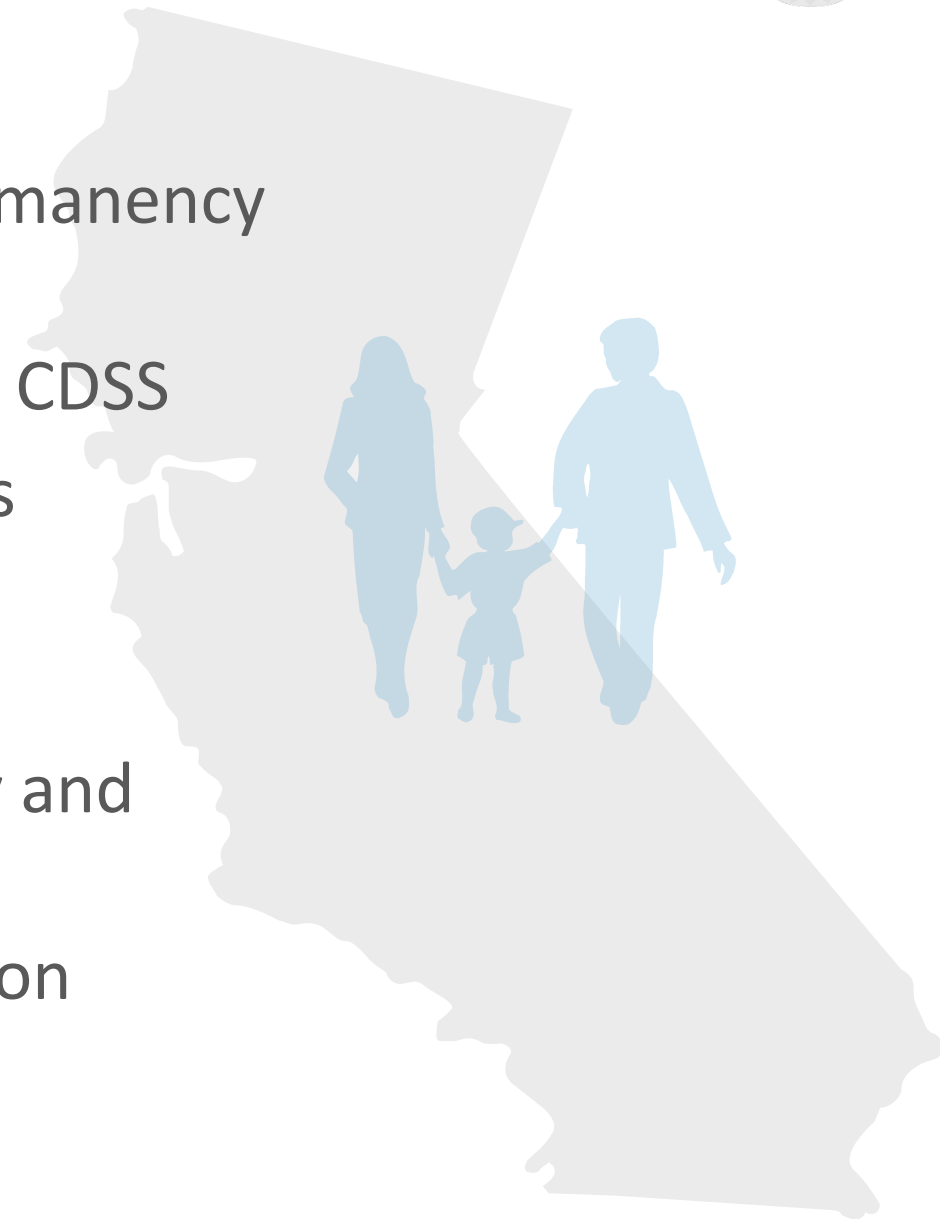
Facilitator: Heather Hostler, Director, Office of Tribal Affairs, CDSS

<http://www.dss.ca.gov/dsssource/>



# CDSS Presenters

- Valerie Earley, Branch Chief, Child and Youth Permanency Branch
- Heather Hostler, Director, Office of Tribal Affairs, CDSS
- Dave McDowell, Branch Chief, Children's Services Operation and Evaluation Branch
- Roy Westfall, Attorney III, CDSS Legal
- Kelly Winston, Bureau Chief, Child Welfare Policy and Program Development
- Rochelle Trochtenberg, Foster Care Ombudsperson





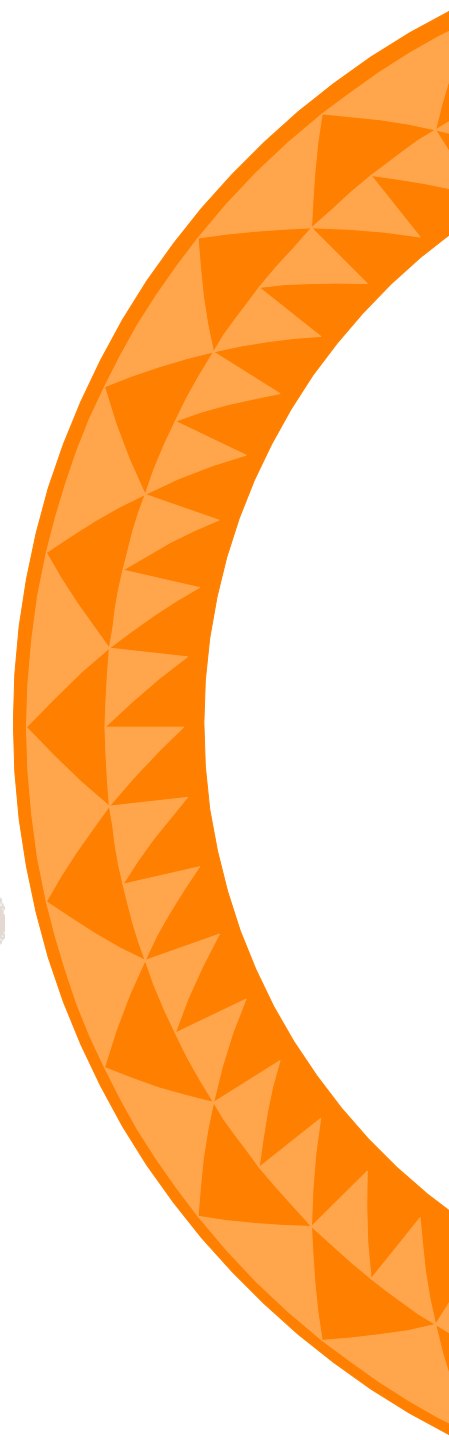
# Session Agenda

- California's Child Welfare System Overview
- Overview of Branches and Bureaus
- Legal Overview
- Legislative & Budget Process
- Consultation and Engagement

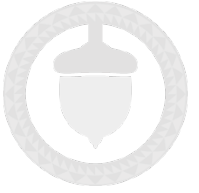


# In the Spirit of Partnership...

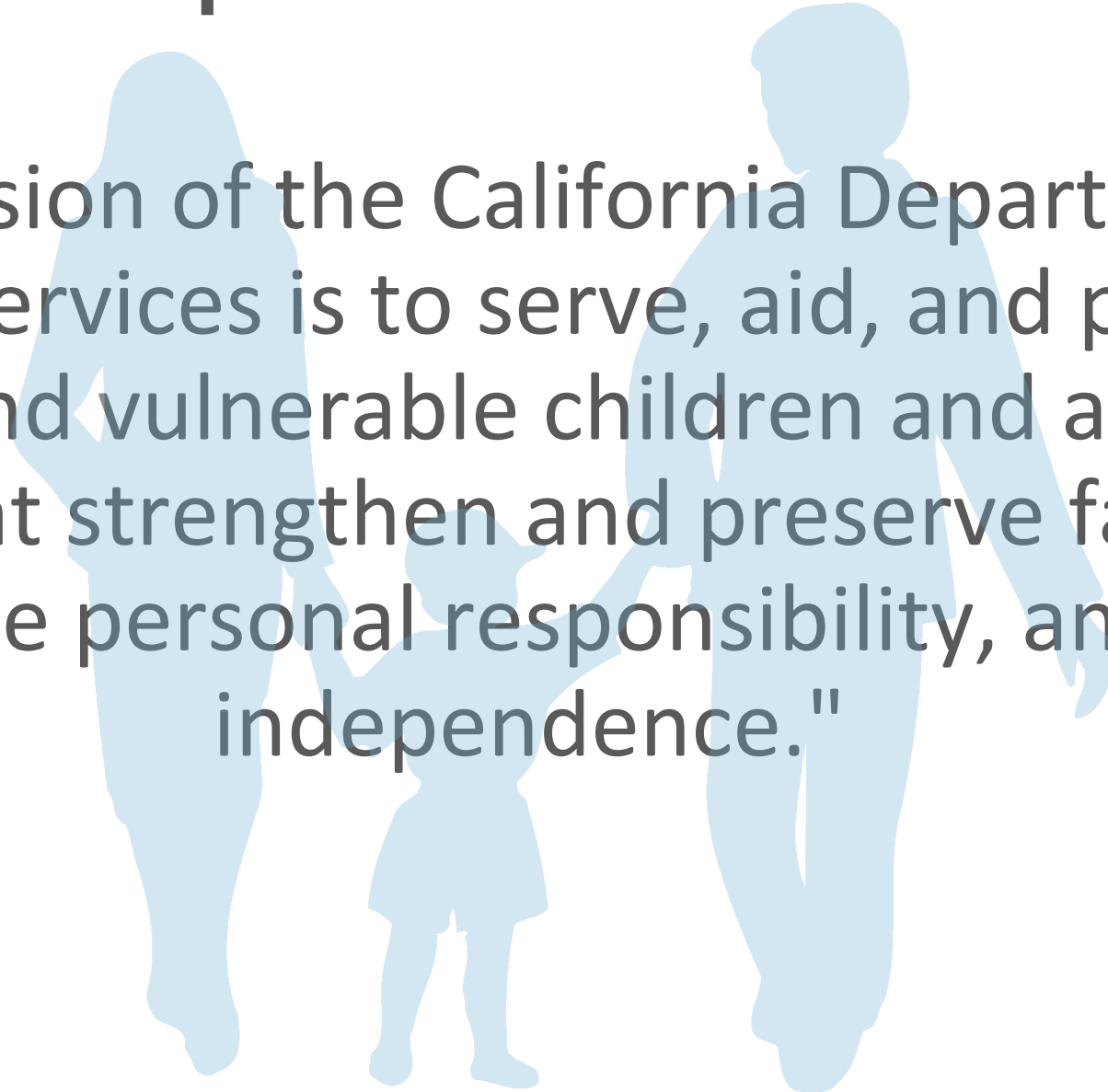
- Tribal Consultation
- Tribal Engagement Strategy
- Tribal Consultation Summit



# The California Department of Social Services



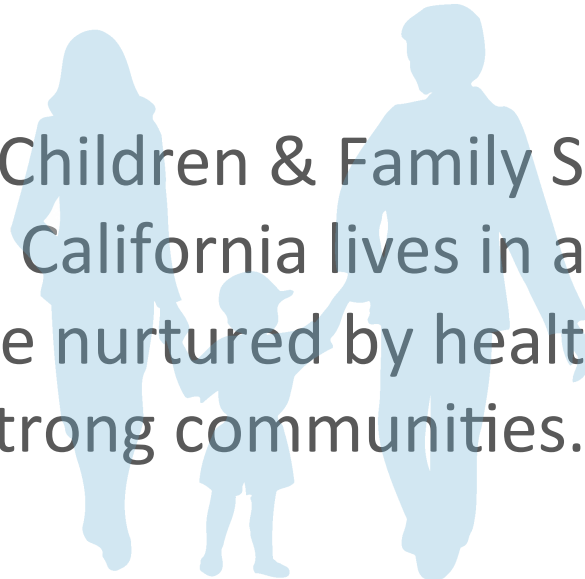
"The mission of the California Department of Social Services is to serve, aid, and protect needy and vulnerable children and adults in ways that strengthen and preserve families, encourage personal responsibility, and foster independence."



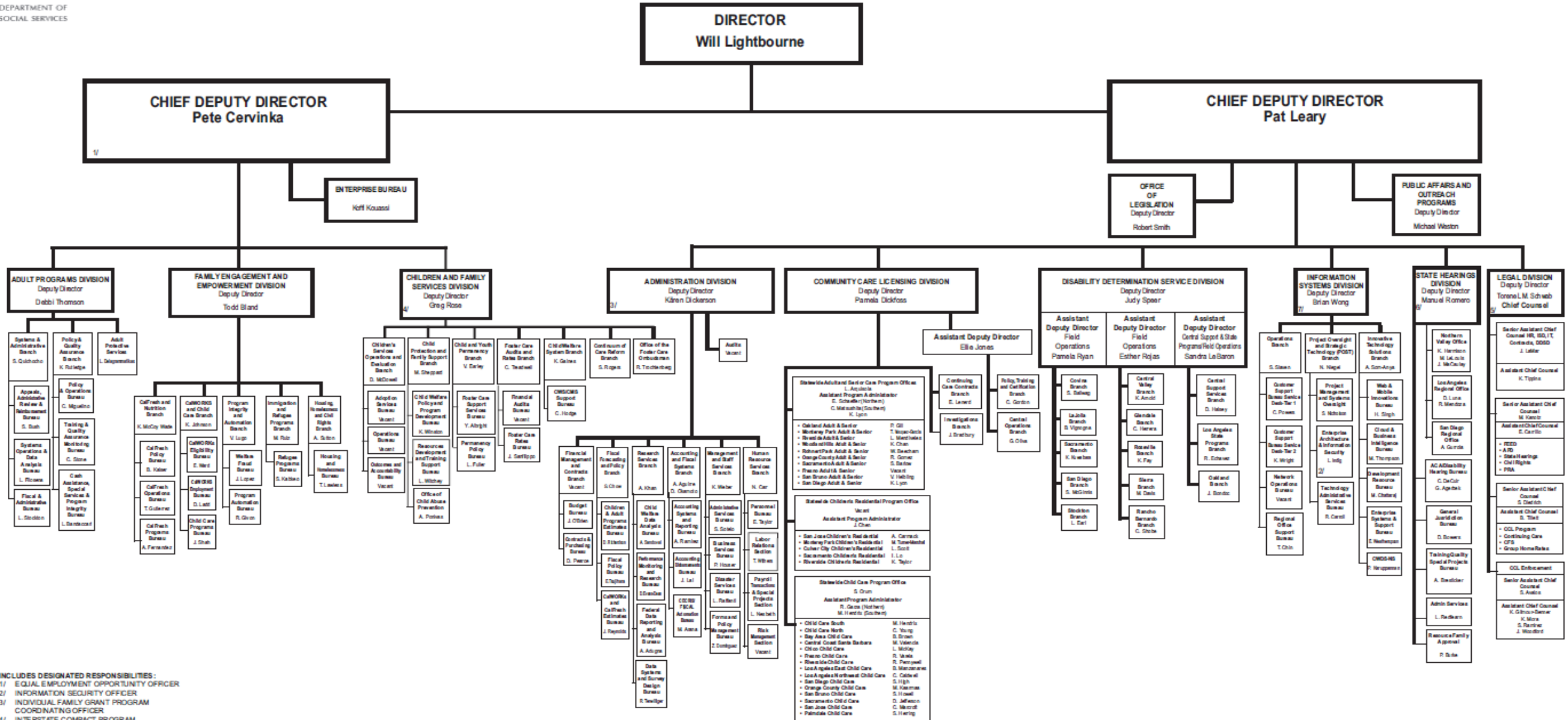
# Vision



The vision of the Children & Family Services Division:  
Every child in California lives in a safe, stable  
permanent home nurtured by healthy families and  
strong communities.



# CALIFORNIA DEPARTMENT OF SOCIAL SERVICES ORGANIZATION CHART January 2018



INCLUDES DESIGNATED RESPONSIBILITIES:  
1/ EQUAL EMPLOYMENT OPPORTUNITY OFFICER  
2/ INFORMATION SECURITY OFFICER  
3/ INDIVIDUAL FAMILY GRANT PROGRAM COORDINATING OFFICER  
4/ INTERSTATE COMPACT PROGRAM ADMINISTRATOR  
5/ COUNSEL TO THE DIRECTOR AND CHIEF OF LEGAL DIVISION  
6/ CHIEF ADMINISTRATIVE LAW JUDGE  
7/ CHIEF INFORMATION OFFICER

**California Department of Social Services  
Children and Family Services Division  
January 2018**

**GREG E. ROSE**  
Deputy Director  
(916) 657-2614

**TENNILLE NICKS**  
Executive Assistant  
(916) 657-2614

**TRACY DOAN**  
Special Projects  
(916) 657-2614

**HEATHER HOSTLER**  
Office of Tribal Affairs  
(916) 657-2614

**ROCHELLE TROCHTENBERG**  
Office of the California Foster Care  
Ombudsperson  
(916) 651-6560

**JESSICA ROUGEUX**  
Office of the California Foster  
Care Ombudsperson  
(916) 651-6560

**LORI STARNES**  
Central Operations  
Management Organization  
(916) 657-2614

**ERICA WILLETT**  
Central Operations  
Management Organization  
(916) 657-2614

**DAVE MCDOWELL**  
Children's Services Operations and  
Evaluation Branch  
(916) 651-8099

**MARY SHEPPARD**  
Child Protection and Family  
Support Branch  
(916) 651-6600

**CHERYL TREADWELL**  
Foster Care Audits and  
Rates Branch  
(916) 651-9152

**VALERIE EARLEY**  
Child and Youth  
Permanency Branch  
(916) 651-7464

**SARA ROGERS**  
Continuum of Care Reform  
Branch  
(916) 651-9430

**KEVIN GAINES**  
Child Welfare System  
Branch  
(916) 891-3100

**VACANT**  
Performance and  
Program  
Improvement  
Bureau  
(916) 651-8099

**LAUREL  
COATES**  
Adoptions  
Services Bureau  
(916) 651-8089

**JESSIE  
ROSALES**  
Children's  
Services  
Operations  
Bureau  
(916) 651-8100

**KELLY WINSTON**  
Child Welfare  
Policy and  
Program  
Development  
Bureau  
(916) 651-6160

**ANGELA  
PONIVAS**  
Office of Child  
Abuse  
Prevention  
(916) 651-6960

**LISA WITCHEY**  
Resources  
Development and  
Training Bureau  
(916) 651-6600

**JOHN  
SANFILIPPO**  
Foster Care  
Rates Bureau  
(916) 651-2752

**CONSTANCE  
RANGEL**  
Program and  
Financial Audits  
Bureau  
(916) 653-1802

**YVETTE  
ALBRIGHT**  
Foster Care  
Support  
Services Bureau  
(916) 651-7465

**LORI FULLER**  
Permanency  
Policy  
Bureau  
(916) 657-1858

**KIM WRIGLEY**  
Program  
Implementation  
Bureau  
(916) 651-9430

**JESSICA  
TORRECAMPO**  
Policy and  
Performance  
Bureau  
(916) 651-9430

**PHOEBE  
DEMUND**  
Child Welfare  
Services New  
System Licensing  
(916) 891-3100

**CINDY  
VATALARO**  
Child Welfare  
Services New  
System Case  
Management  
(916) 891-3100

**MEGAN RIVERS**  
Child and Family  
Services Review  
Section  
(916) 651-8099

**VACANT**  
Outcomes and  
Accountability  
Section  
(916) 651-8099

**ANN  
MIZOGUCHI**  
Adoptions  
Services Bureau  
(916) 651-8089

**VACANT**  
Children's  
Services  
Operations  
Bureau  
(916) 651-8100

**JULIE  
WATERS**  
Child Safety Unit  
(916) 651-6160

**MARJA SAINIO**  
Family and  
Community  
Support Services  
Unit  
(916) 651-6960

**LUPE GRIMALDI**  
Integrated  
Services Unit  
(916) 651-6600

**STAN CAGLE**  
Foster Care  
Rates Bureau  
(916) 651-2752

**HASYIM AFIFF**  
Financial Audit Unit  
(916) 653-1802

**FRANCINE  
CURTIS-SMITH**  
Branch Program  
Support Unit  
(916) 651-7465

**TURID  
GREGORY-  
FURLONG**  
Concurrent  
Planning Policy  
Unit  
(916) 657-1858

**THERESA  
THURMOND**  
Stakeholder  
Engagement and  
Communication  
Unit  
(916) 651-9430

**GLENN TSANG**  
Policy and  
Regulation  
Development Unit  
(916) 651-9430

**CAROLYN  
HODGE**  
Case Management  
System Support  
Bureau  
(916) 891-3100

**NICOLE HARTER-  
SHAFER**  
Child Welfare  
Services New  
System  
(916) 891-3100

**JULIE  
COCKERTON**  
CFSR Case  
Review Unit 1  
(916) 651-8099

**SHAHLA  
CRAGGS**  
Outcomes Unit 1  
(916) 651-8099

**ILYAS HUSSEIN**  
Adoptions  
Support Unit  
(916) 651-8089

**NAZIA ALI-  
PRASAD**  
Critical Incident  
Oversight and  
Support Unit 1  
(916) 651-8100

**AMANDA  
ANDREWS**  
Pre-Placement  
Policy Unit  
(916) 651-6160

**ROBERT  
BRADSHAW**  
Prevention  
Network  
Development Unit  
(916) 651-6960

**ELIZABETH  
NEWBY**  
Training Support  
Unit  
(916) 651-6600

**MICHAEL FORD**  
Rates Unit  
(916) 651-2752

**FANITA POLK**  
Policy and Support  
Unit  
(916) 653-1802

**ANTHONY  
BENNETT**  
Transition Age  
Youth Policy Unit  
(916) 651-7465

**JANE TROGLIA**  
Adoption Policy  
Unit  
(916) 657-1858

**KENDRA  
ELMENDORF**  
Resource Family  
Approval  
Implementation Unit  
(916) 651-9430

**ANETRA  
TURNER**  
Performance and  
Transparency  
Unit  
(916) 651-9430

**KIM BEACH -  
LEWIS**  
Administrative  
Services  
(916) 891-3100

**ELIZABETH  
REYNOLDS**  
Administrative  
Services  
(916) 891-3100

**JACLYN ELK**  
CFSR Case  
Review Unit 2  
(916) 651-8099

**KATIE  
SOMMERDORF**  
Outcomes Unit 2  
(916) 651-8099

**JONI FURUOKA**  
Adoptions Policy  
and Support  
Unit 1  
(916) 651-8089

**DANIEL WILSON**  
Critical Incident  
Oversight and  
Support Unit 2  
(916) 651-8100

**ELIZABETH  
AZEVEDO**  
Child Trafficking  
Response Unit  
(916) 651-6160

**HEATHER  
PANKIW**  
Title IV-E Waiver  
Unit  
(916) 651-6600

**REBEKAH  
AGUIRRE**  
Funding and  
Eligibility Unit  
(916) 651-2752

**VACANT**  
Fiscal/  
Provisional  
Audits Unit  
(916) 653-1802

**TRICIA KNIGHT**  
Foster Caregiver  
Policy and Support  
Unit  
(916) 651-7465

**SARAH DAVIS**  
Placement  
Services Support  
Unit  
(916) 657-1858

**RAMI CHAND**  
Program and  
Services  
Implementation  
Unit  
(916) 651-9430

**WENDY COOK**  
Technical  
Assistance and  
Oversight Unit  
(916) 651-9430

**LIANNA  
LEONHARD**  
Program Policy  
Unit  
(916) 891-3100

**JEFFREY DENT**  
Program Policy  
Unit  
(916) 891-3100

**STEVE  
SHIELDS**  
Adoptions Policy  
and Support  
Unit 2  
(916) 651-8089

**CHRISTINA  
OLIVER**  
Out of State  
Placement Policy  
Unit  
(916) 651-8100

**DAISY  
BRAXTON**  
Rates Policy Unit  
(916) 651-2752

**CYNTHIA  
del Rosario**  
Fiscal/Provisional  
Audits Unit – Los  
Angeles  
(916) 653-1802

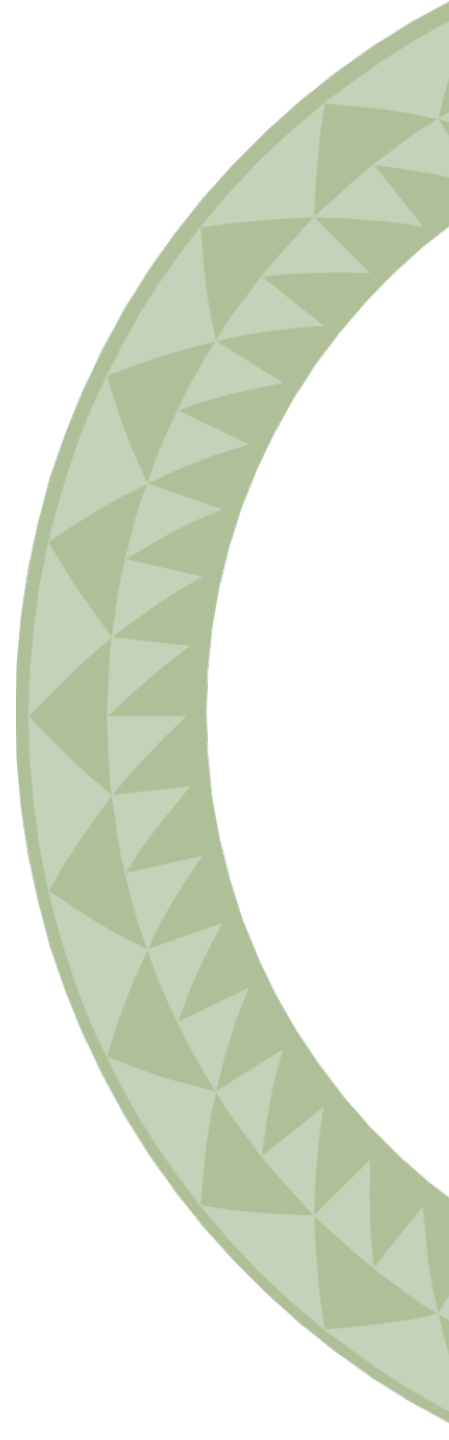
**CELESTE  
COLEMAN**  
Performance  
Audit Unit  
(916) 653-1802

**ADOPTION  
REGIONAL AND  
FIELD OFFICES**  
Arcata, Chico,  
Fresno, Oakland,  
Monterey Park,  
Sacramento,

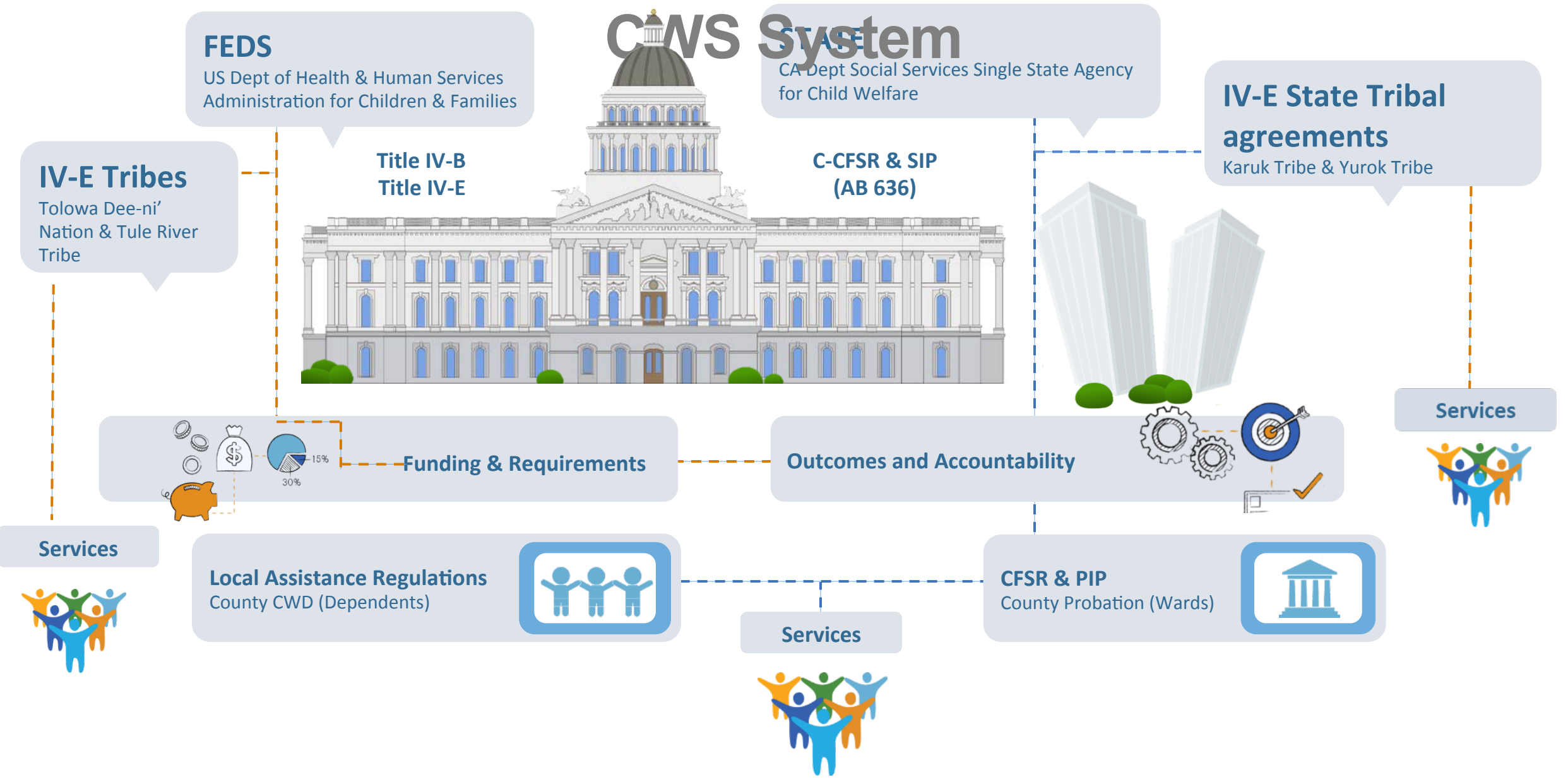


# Children and Family Services Overview

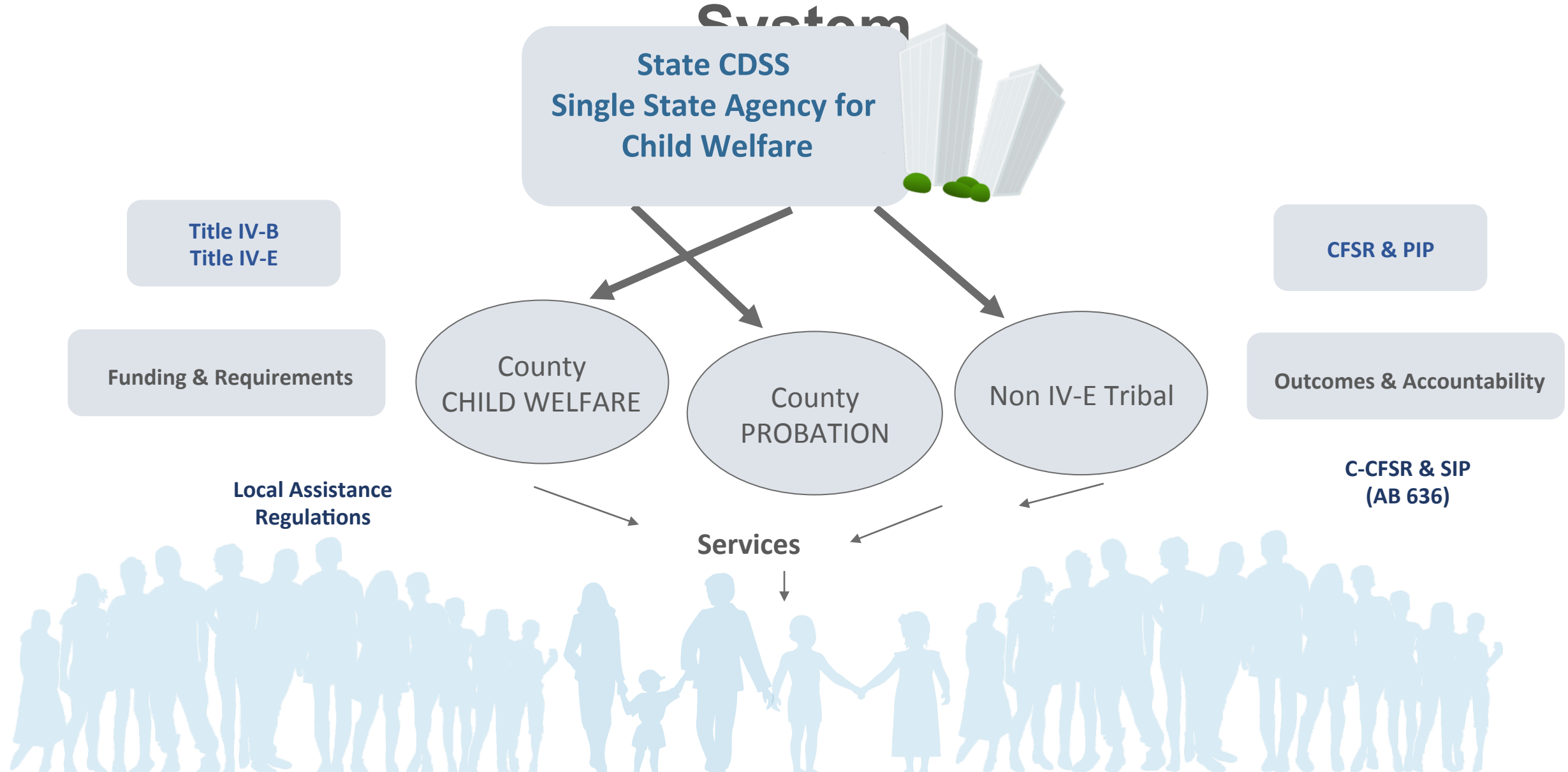
The Children and Family Services Division (CFSD) provides leadership and oversight of county and community agencies in the implementation of child welfare services programs through regulations, training, technical assistance, incentives and program evaluations.



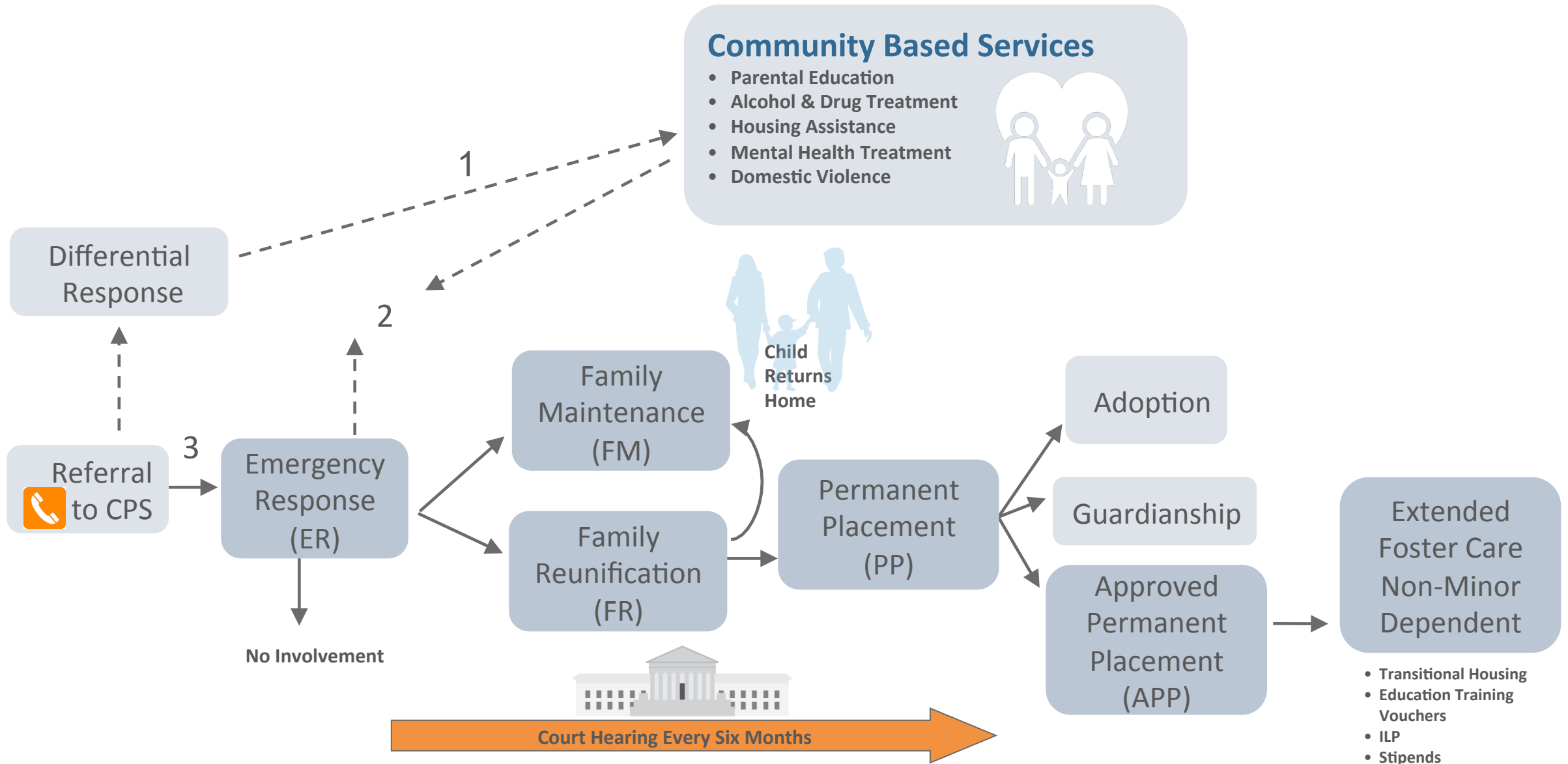
# California: State-Supervised, County-Administered



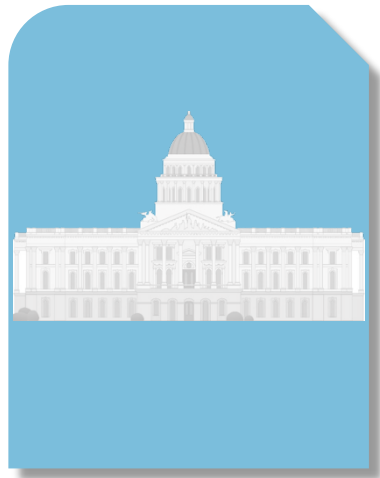
# California: State-Supervised, County-Administered CWS System



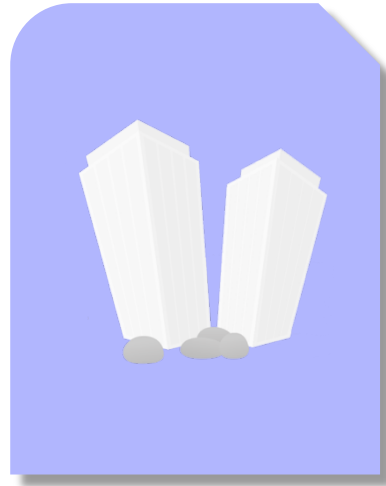
# CALIFORNIA'S CHILD WELFARE SYSTEM



# How CDSS provides Guidance to Counties



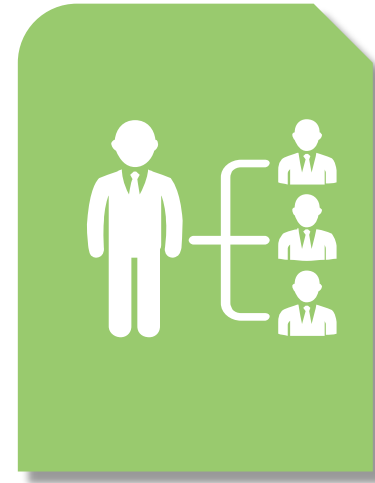
Legislature Passes  
Laws



CDSS Develops  
Policy &  
Regulations



CDSS Programs Issue  
All County Letter (ACL)  
All County Information  
Notice (ACINs)  
All Welfare Directors  
Letter (AWD)  
Fiscal Letters



Outcome &  
Accountability



CDSS Guidance to  
Counties

# Role of the Court



Ensure due process and that basic rights of children and parents (and tribes) are enforced when children are in the custody of the state.



Ensure the legal obligations of governmental agencies to provide services are met.

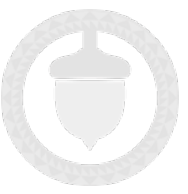


Make any order necessary for the best interest of the child:

Care, custody, placement, conduct, supervision, support, education, medical care, etc.



Ensure a level of accountability in each case.



# Role of the Child Protection and Family Support Branch



## Office of Child Abuse Prevention (OCAP)

- Administers Contracts and Grants to community agencies to provide prevention services
- Oversight of prevention services and funding to county CWS agencies



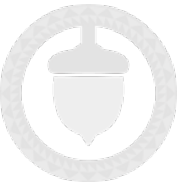
## Resources Development and Training Support Bureau

- Oversight of training system for social workers and probation placement officers
- Integration of services between agencies such as mental health and juvenile probation placement systems.



## Child Welfare Policy and Program Development Bureau

- Hotline and Emergency Response Investigations
- Services to prevent removal (Family Maintenance)
- Commercial Sexual Exploitation Prevention and Response



# Native Americans Entering Foster Care

Referrals, Substantiations & Entries 2017



**3,860**

**CHILDREN**

WITH ALLEGATIONS



**673**

SUBSTANTIATED CASES



**400**

ENTERED INTO CARE

Approximately 59.4% of  
substantiated cases end up in foster  
care

Agency: Child Welfare, Age: 0-17 Years, Children with Allegations, Substantiations, and Entries per 1,000 Child Population

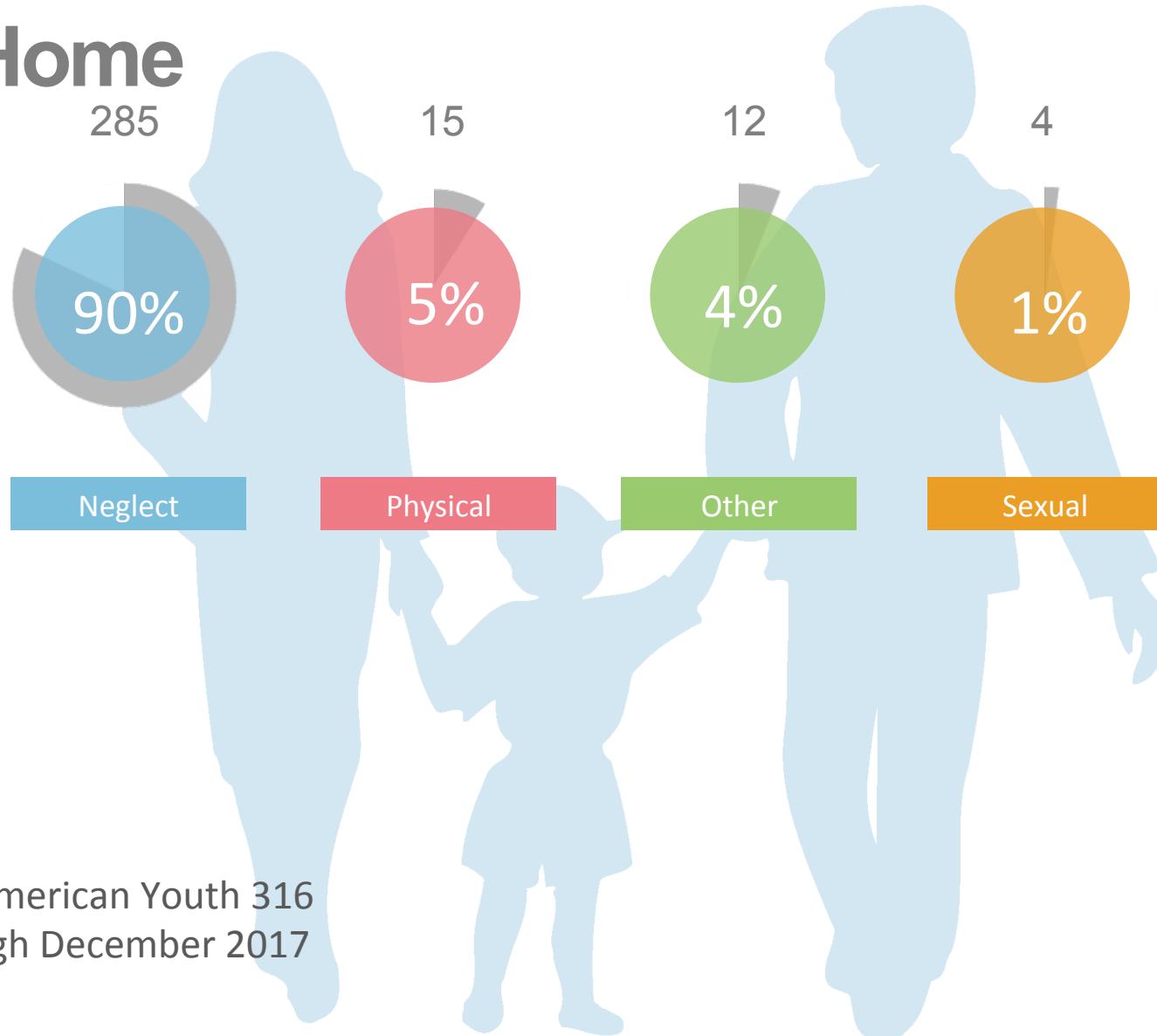
Data Source: CWS/CMS 2017 Quarter 4 Extract.

[http://cssr.berkeley.edu/ucb\\_childwelfare/RefRates.aspx](http://cssr.berkeley.edu/ucb_childwelfare/RefRates.aspx)

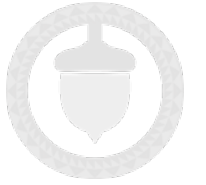




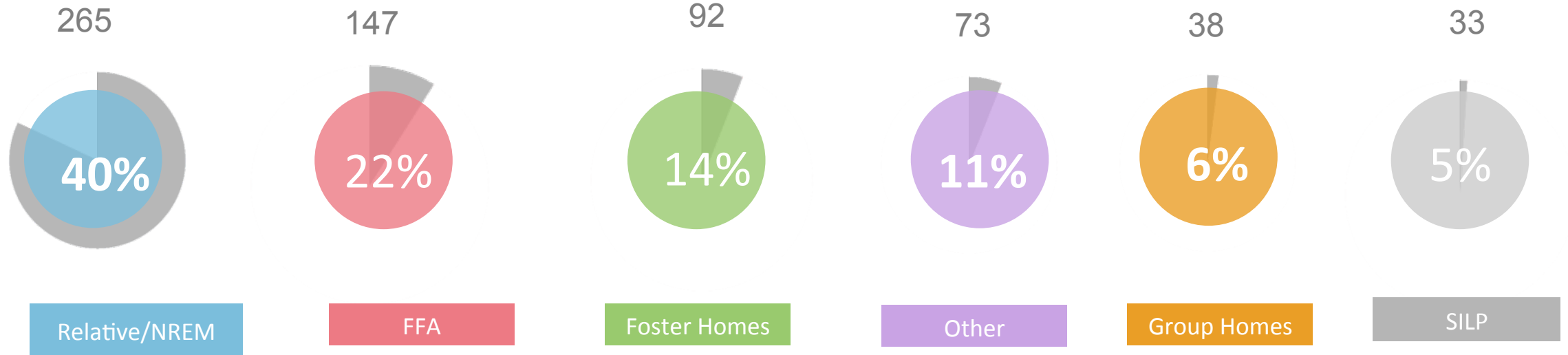
# Reason for Removal Native American Children from Home



Total Native American Youth 316  
January through December 2017



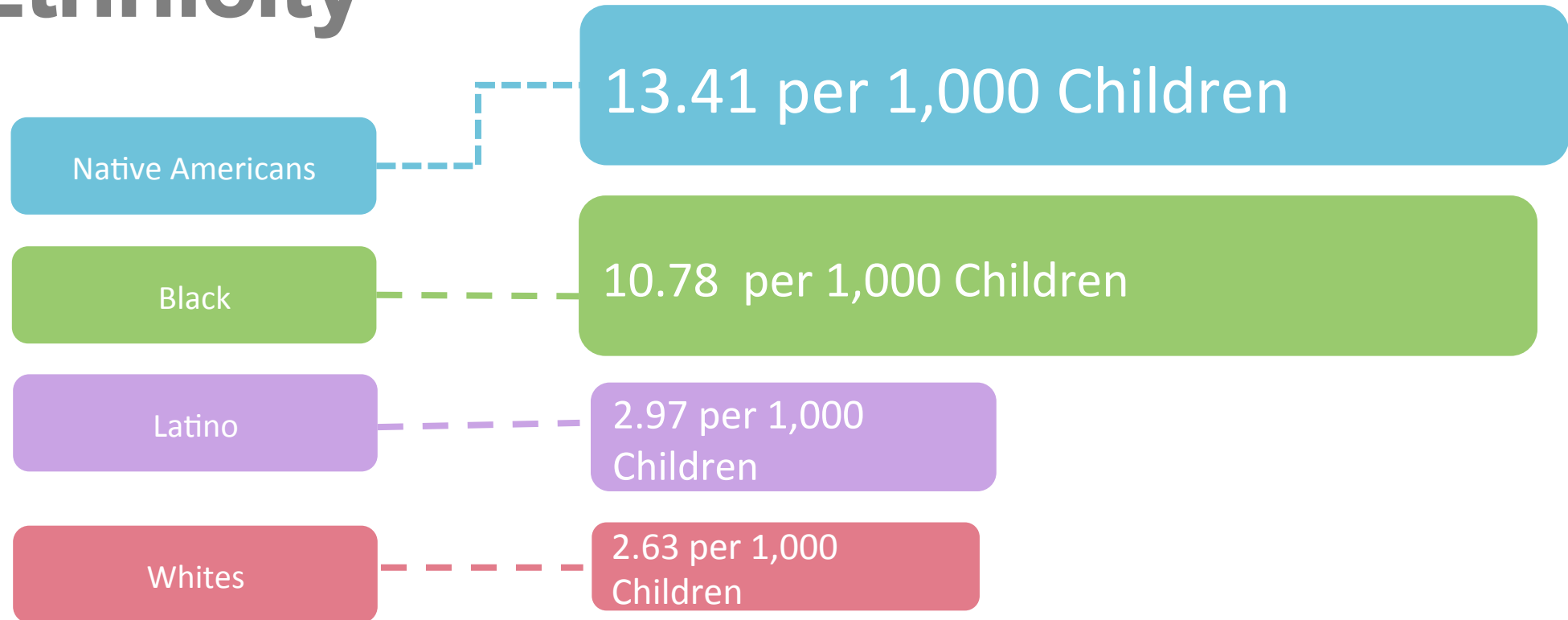
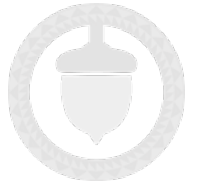
# Placement of Native American Children



Total Native American Youth in care 665  
January 2018

# 2017 Disparity Indices by Ethnicity

## Entries into Foster Care



# Types of Foster Care Placements



## Foster Family Homes

Licensed and monitored by public agency



## ST RTP/Group Homes

Residential treatment/congregate care



## Tribally Approved Homes



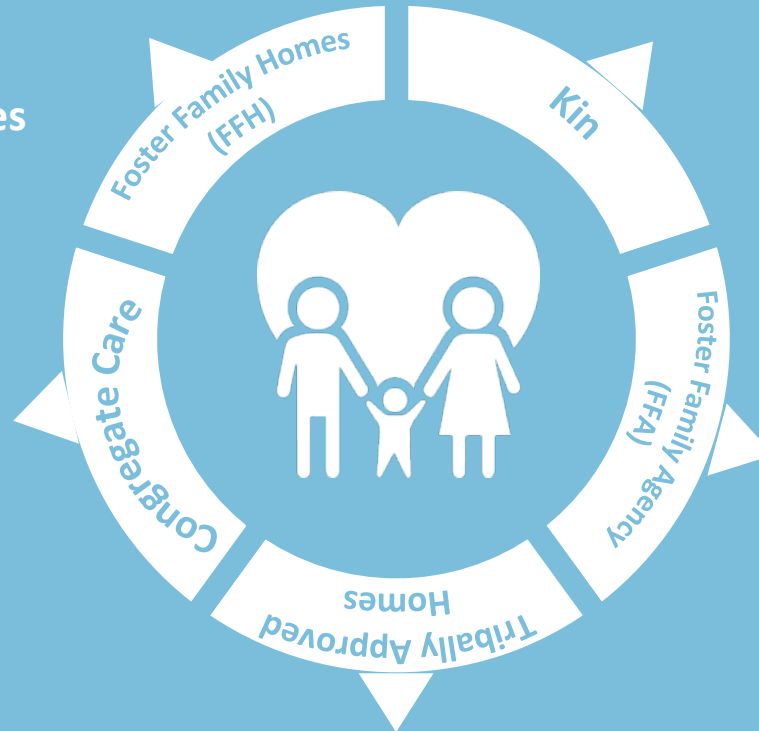
## Kin

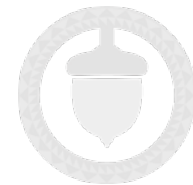
Relatives & Non-Related Extended Family Members (NREFMs)-approved and monitored by county agency,



## Foster Family Agency

Foster home certified and monitored by private, non-profit agency





# Role of the Child and Youth Permanency Branch



Supervises the delivery of services and benefits to children in foster care including.

- foster care
- kinship care
- young adults (AB 12)



Functions include program and policy development via regulation and policy letters; policy interpretation and technical assistance; analysis of pending legislation, etc.

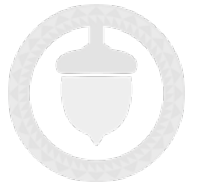


Services delivered to children and youth in foster care are focused on achieving permanency through:

- reunification
- guardianship
- adoption,
- improving their well-being

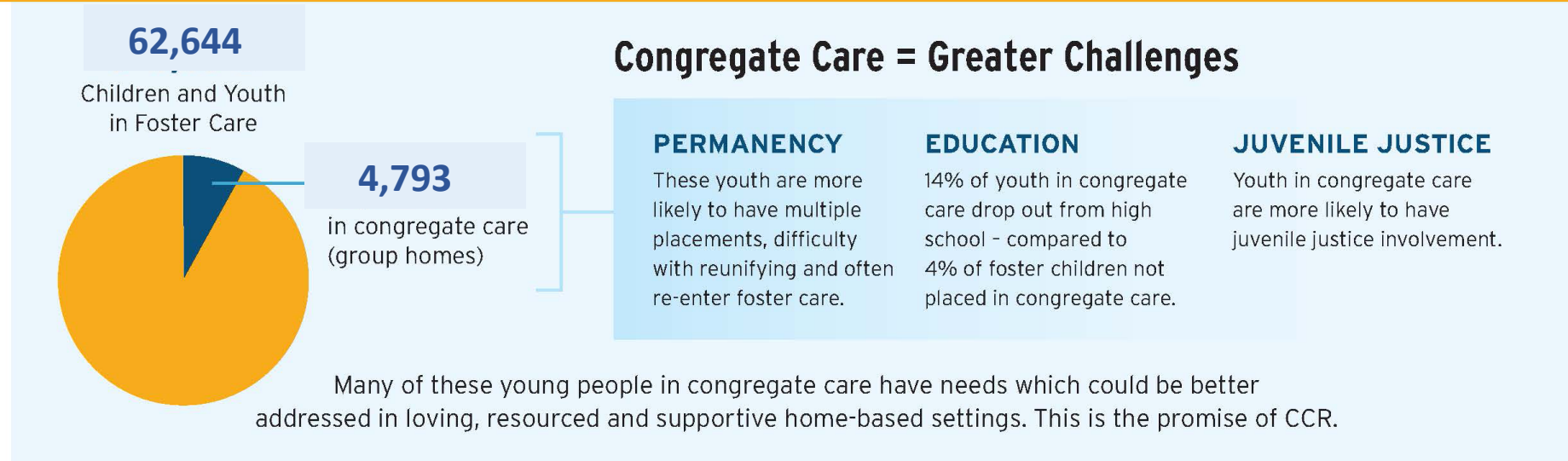


This work is carried out through three bureaus: the Foster Care Support Services Bureau, the Permanency Policy Bureau.

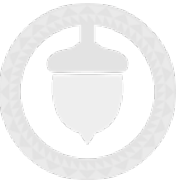


# The Promise of Continuum of Care Reform (CCR)

## FACTS ABOUT CONGREGATE CARE



All children will live with a committed, permanent and nurturing family.



# Role of the Office of Foster Care Ombudsman

## Rochelle Trochtenberg, Ombudsman



If you are concerned about the care, treatment or services provided to children and youth receiving foster care services: Call Foster Care Help Line 1-877-846-1602



Investigates complaints & coordinates with counties to address concerns related to foster youth in their county.

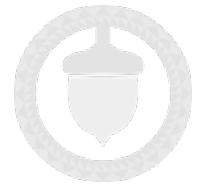


Provides direct outreach to foster youth who may be experiencing problems with their care providers or county workers.



- Listens to your concerns
- Documents your complaints
- Gathers all relevant information
- Remains neutral and impartial
- Formulates a process for possible resolution & makes recommendations
- Gives feedback on actions to every complainant

# Children's Services Operation and Evaluation Branch, Dave McDowell, Branch Chief



- Monitoring implementation of laws and regulations governing the provision of CWS by 58 California counties
- Review of child fatality/near fatality statements of findings submitted by counties

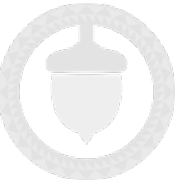
- Responsible for maintaining the integrity of child and family services
- C-CFSR

- Adoption assistance program policy
- Coordinating child welfare disaster plans
- Ensuring interstate placements are in compliance

- Staffing Social Worker Empowerment hotline for county staff
- Operating state Adoption District Offices and ensuring the confidentiality of all California adoption records and providing post-adoption services.

In addition, this branch has primary responsibility for federal reviews and reporting such as the Federal Child and Family Services Review (CFSR), the Annual Progress and Services Report (APSR), and the 5-yr Child and Family Services Plan (CFSP)

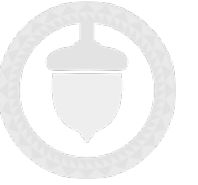




# Differences Between Consultation and Review Process

Opportunity for Reviews





# Child and Family Services

## Reviews



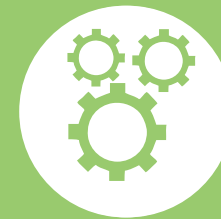
Statewide  
Assessment



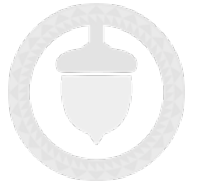
Focus  
Groups



Case  
Reviews

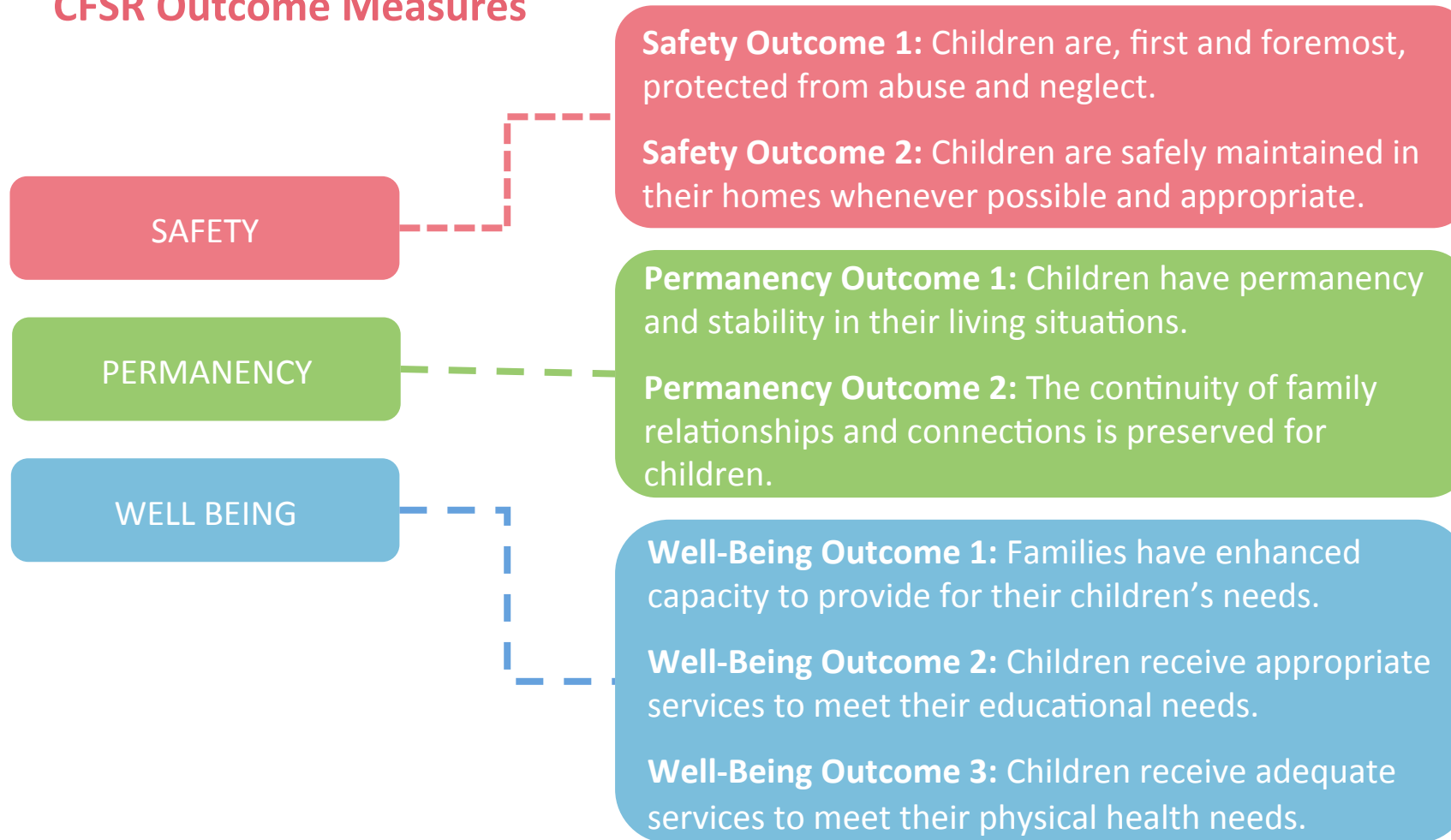


Program  
Improvement  
Plan (PIP)



# Measures

## CFSR Outcome Measures



None of the 7 outcomes was found to be in substantial

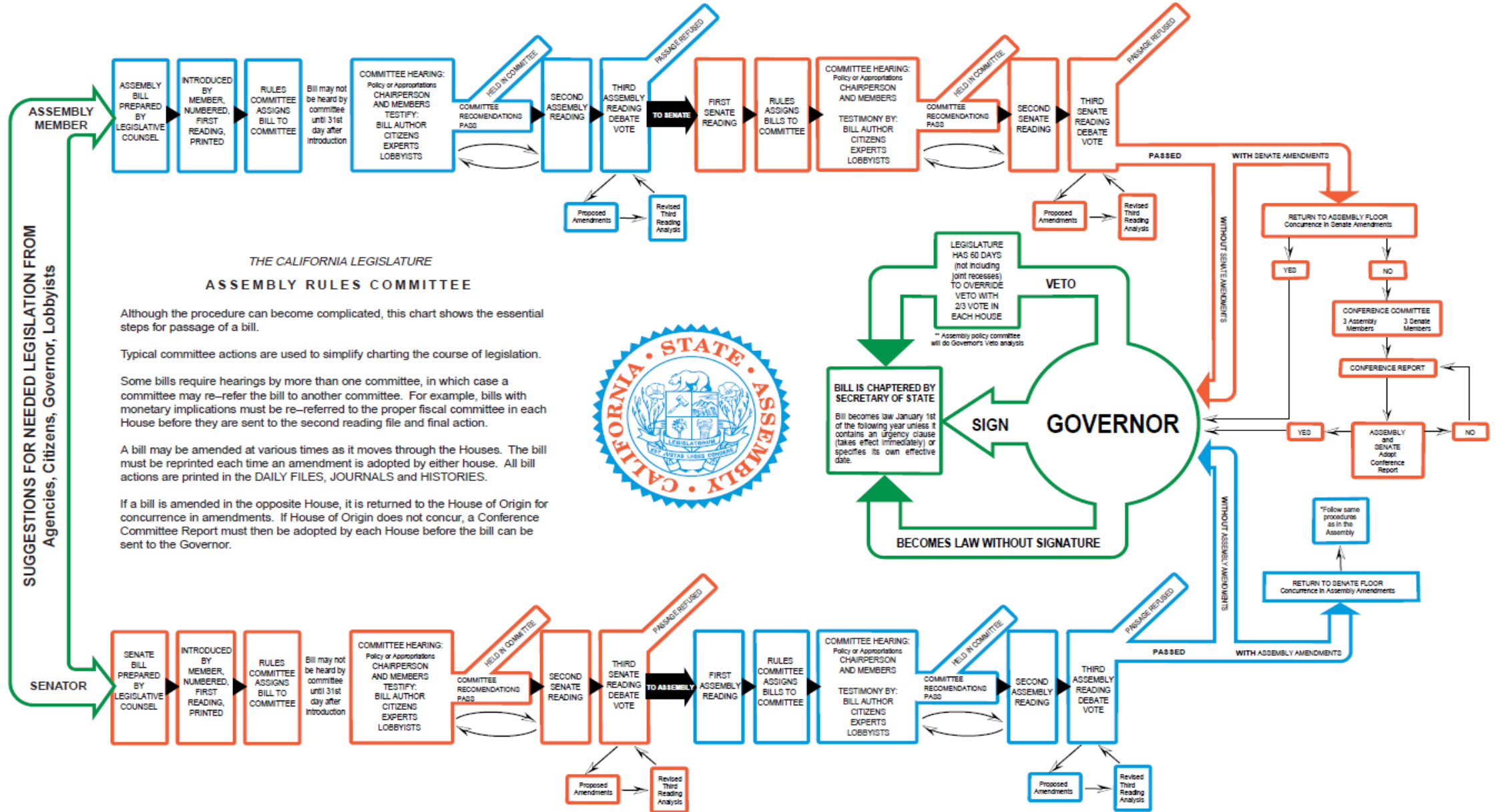
# The C-CFSR Five-Year Cycle



\*ACIN No. I-37-17E: C-CFSR Five-Year Schedule (provides due dates for reports for each county)

# THE LIFE CYCLE OF LEGISLATION

*From Idea into Law*



## THE CALIFORNIA LEGISLATURE ASSEMBLY RULES COMMITTEE

Although the procedure can become complicated, this chart shows the essential steps for passage of a bill.

Typical committee actions are used to simplify charting the course of legislation.

Some bills require hearings by more than one committee, in which case a committee may re-refer the bill to another committee. For example, bills with monetary implications must be re-referred to the proper fiscal committee in each House before they are sent to the second reading file and final action.

A bill may be amended at various times as it moves through the Houses. The bill must be reprinted each time an amendment is adopted by either house. All bill actions are printed in the DAILY FILES, JOURNALS and HISTORIES.

If a bill is amended in the opposite House, it is returned to the House of Origin for concurrence in amendments. If House of Origin does not concur, a Conference Committee Report must then be adopted by each House before the bill can be sent to the Governor.



SUGGESTIONS FOR NEEDED LEGISLATION FROM  
Agencies, Citizens, Governor, Lobbyists

ASSEMBLY MEMBER

SENATOR

SIGN GOVERNOR

BECOMES LAW WITHOUT SIGNATURE

BILL IS CHAPTERED BY SECRETARY OF STATE  
Bill becomes law January 1st of the following year unless it contains an urgency clause (takes effect immediately) or specifies its own effective date.

LEGISLATURE HAS 60 DAYS (not including joint recesses) TO OVERRIDE VETO WITH 2/3 VOTE IN EACH HOUSE  
\* Assembly policy committee will do Governor's veto analysis

VETO

PASSED

WITH SENATE AMENDMENTS

WITHOUT SENATE AMENDMENTS

WITHOUT ASSEMBLY AMENDMENTS

PASSED

WITH ASSEMBLY AMENDMENTS

RETURN TO ASSEMBLY FLOOR  
Concurrence in Senate Amendments

YES

NO

CONFERENCE COMMITTEE  
3 Assembly Members  
3 Senate Members

CONFERENCE REPORT

ASSEMBLY and SENATE Adopt Conference Report

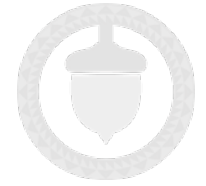
YES

NO

Follow same procedure as in the Assembly

RETURN TO SENATE FLOOR  
Concurrence in Assembly Amendments

# Role of the CDSS Office of Legislation



Serves as liaison between the department and the legislature.



Coordinates all legislative matters for the department.



Once a bill proposal is provided to the legislature, our internal processes are confidential



4 positions: Oppose; Oppose unless amended; neutral; neutral if amended



Executives determine how to address issues and concerns (i.e. Policy bill, Trailer bill, Federal Compliance bill, regulation, ACL/ACIN)

# Navigating the State Budget Process

Each year the Governor and Legislature work to craft the state's spending plan. While the January-to-June period gets the most attention, the process of crafting the budget is an ongoing enterprise, giving Californians ample opportunity to stay engaged and involved year-round.

## The Governor

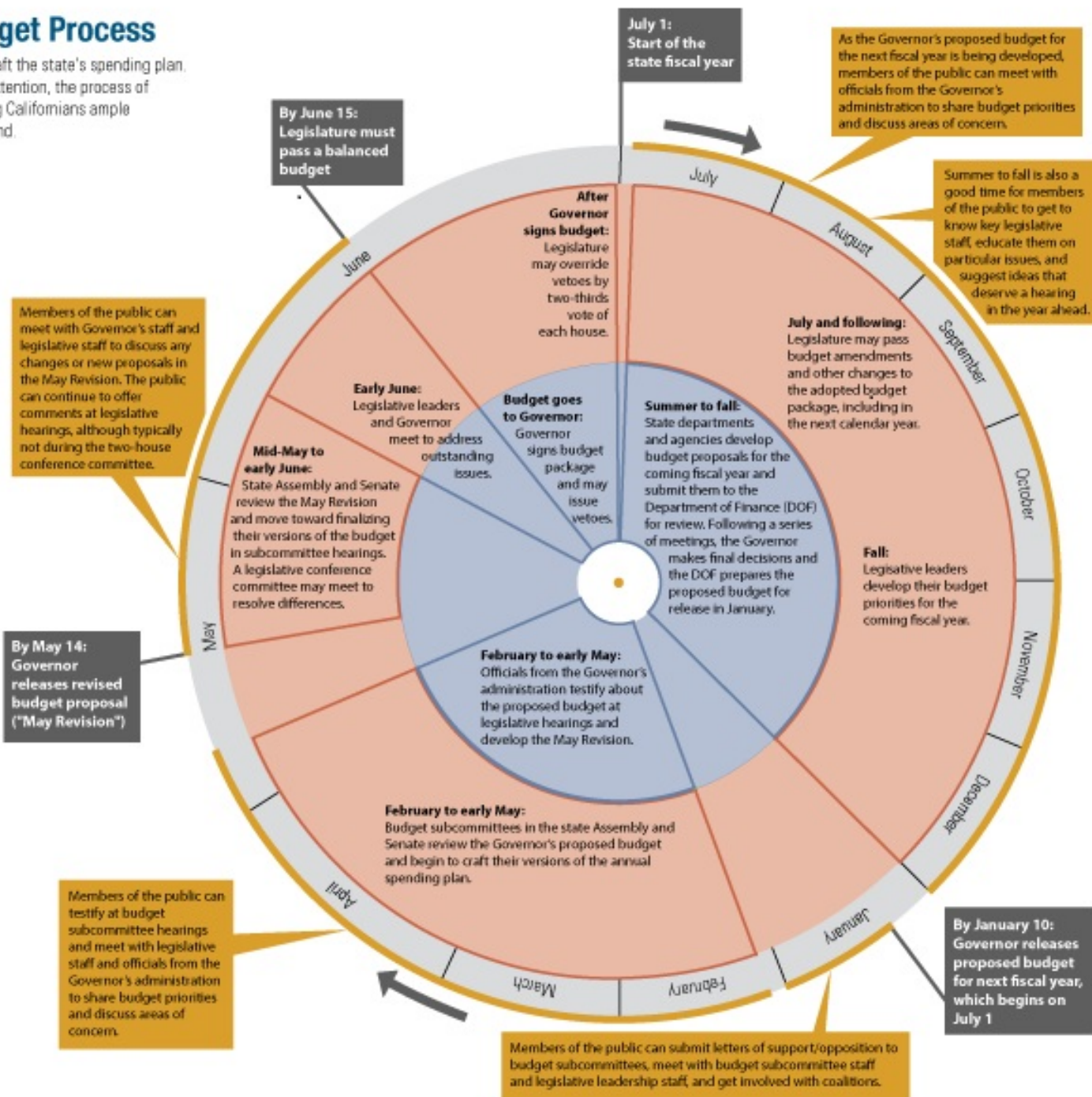
The Governor has the lead role in developing the state budget. Each year, the Governor proposes a spending plan, which is introduced as the budget bill in the Legislature. The Governor can sign or veto the budget bill passed by legislators as well as other bills in the budget package that make policy changes related to the budget. The Governor can also reduce or eliminate individual appropriations using the line-item veto.

## The Legislature

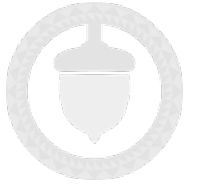
The Legislature – made up of the Assembly and Senate – reviews the Governor's proposed budget and crafts its own version of the spending plan. The Legislature can maintain, modify, or reject the Governor's proposals, with review occurring through each house's budget committee and related subcommittees. The Legislature must pass the budget bill, but not other bills in the budget package, by June 15. The Legislature can override a Governor's veto by a two-thirds vote of each house.

## The Public

The public has various opportunities for input during the budget process. Members of the public can meet with officials from the Governor's administration and with legislators and their staffs, testify before budget committees and subcommittees, and write letters of support and opposition. Through individual engagement or as part of coalitions, members of the public can express their budget priorities and areas of concern.



# Total Budgeted Funding for Children's Programs

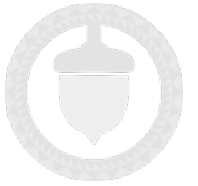


Year	Total	Federal	State	LRF*	County	Reimb.**
FY 2010-11: Pre-Realignment	\$5,595,698	\$2,573,130	\$1,649,633	\$0	\$1,242,566	\$130,369
FY 2011-12: Realignment	\$5,357,121	\$2,447,265	\$84,060	\$1,561,199	\$1,132,952	\$131,645
FY 2016-17: Post-Realignment	\$5,982,693	\$2,669,139	\$329,664	\$1,561,199	\$1,233,611	\$189,080
FY 2017-18: Post-Realignment	\$6,197,314	\$2,807,965	\$408,588	\$1,561,199	\$1,218,269	\$201,293

\* The Local Revenue Fund (LRF) does not include the CDSS' State Operations Agency Adoptions, Extended Foster Care Additional Base Funding and Adult Protective Services costs.

\*\* Reimbursements include Title XIX expenditure and State Contracts County Reimbursement funding.



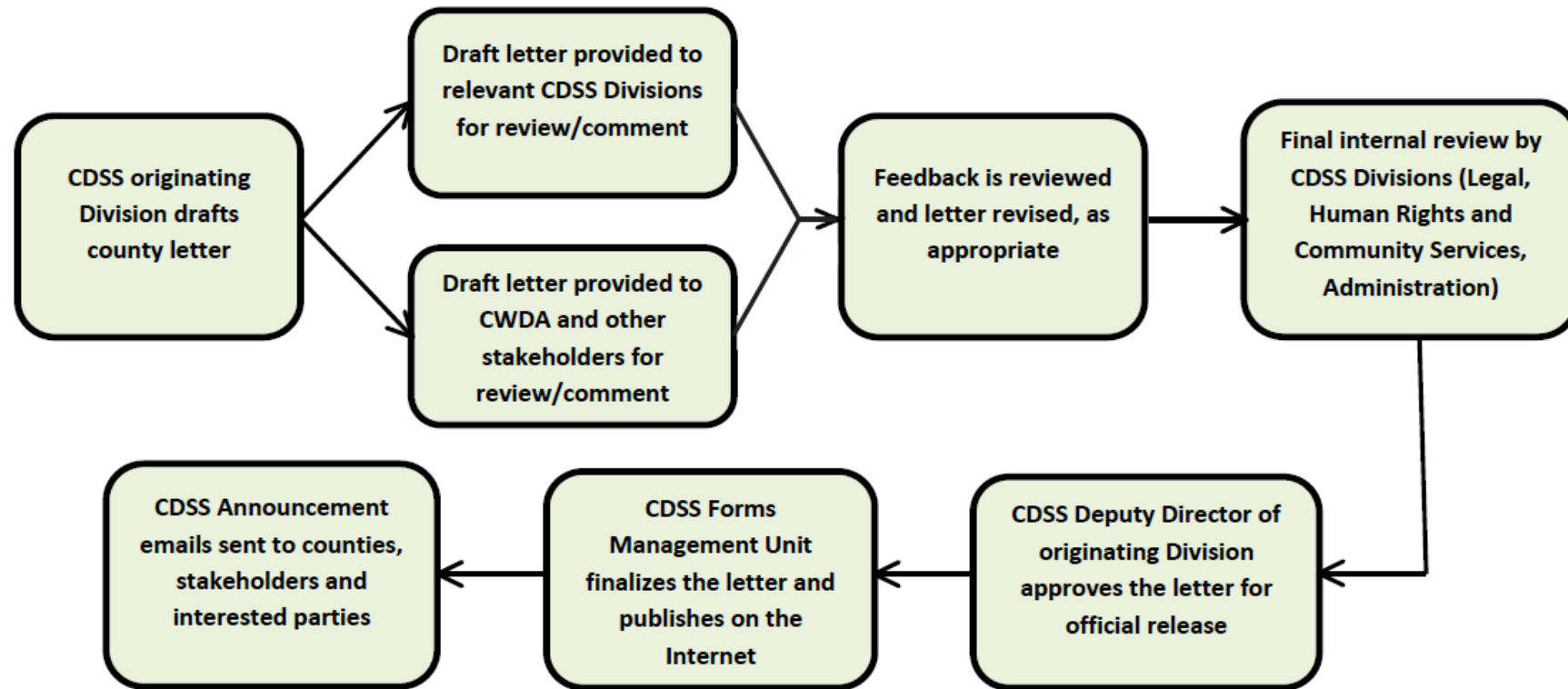


# Proposition 30 – November 2012

- Realignment funding is constitutionally protected
- New requirements that increase overall costs must be funded
- State pays 50% of required federal changes or lawsuits
- Shift in the state-local relationship. Counties are partners.

# CALIFORNIA DEPARTMENT OF SOCIAL SERVICES

## PROCEDURE FOR REVIEW AND RELEASE OF ALL COUNTY LETTERS, ALL COUNTY INFORMATION NOTICES AND COUNTY FISCAL LETTERS



**NOTE:**  
This is generally t



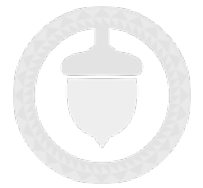
1

/ 1



of documents.

# Get Notices when County Letters are Issued

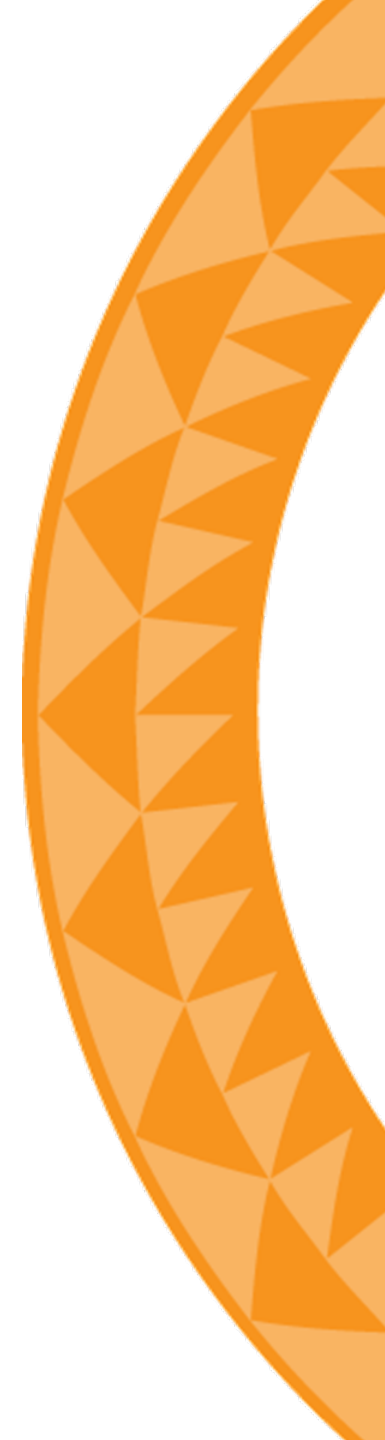
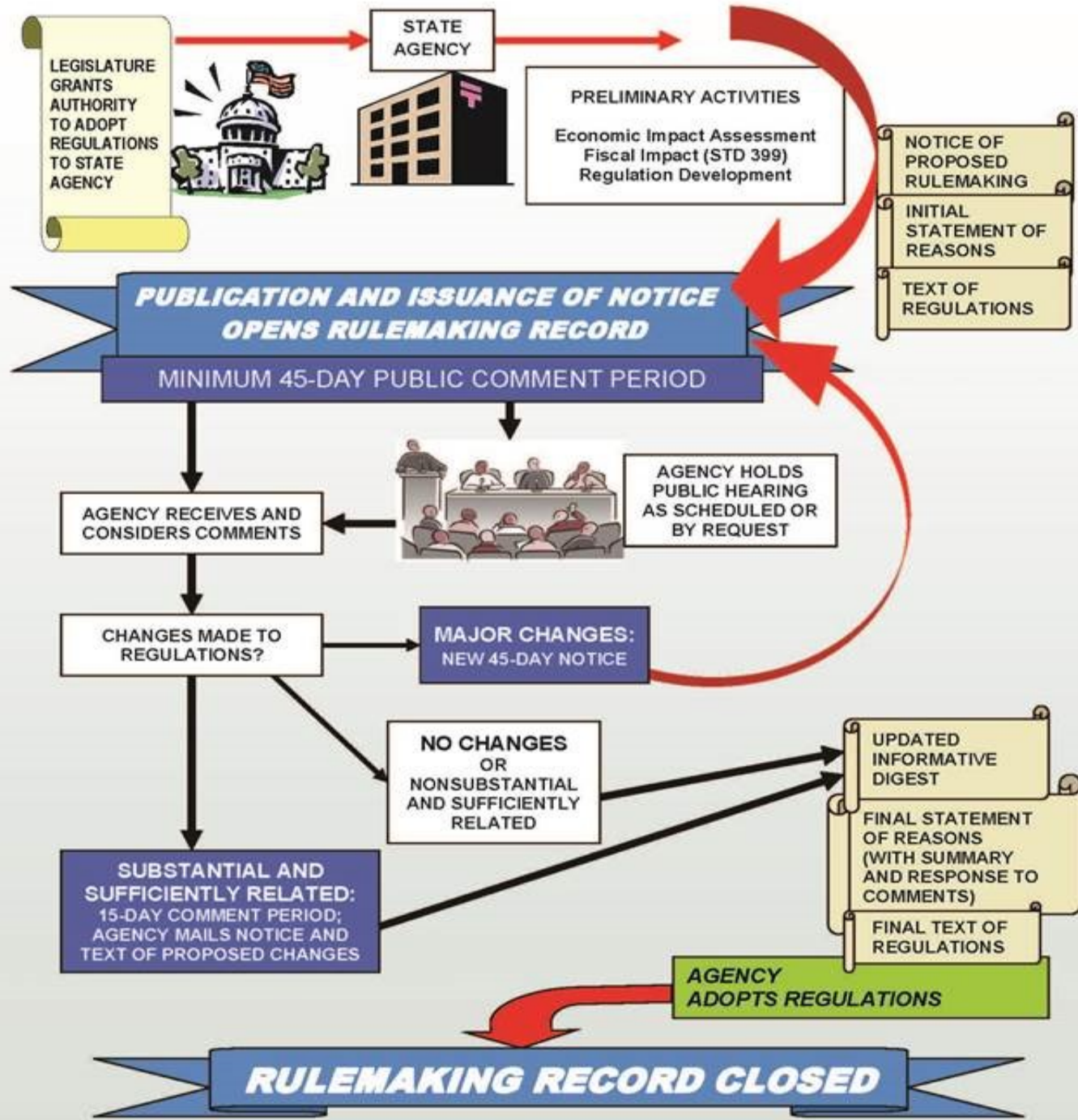


The screenshot shows the California Department of Social Services (CDSS) website. The header includes the CDSS logo, the text 'Department of Social Services', and a language selection dropdown. The navigation menu includes 'Information & Resources', 'Letters/Regulations', 'Forms/Brochures', 'Fiscal/Financial', and 'Data Portal'. The main content area is titled 'Letters and Notices' and lists several categories of notices: All County Information Notices (ACINs), All County Letters (ACLs), All County Welfare Director Letters (ACWDL), County Fiscal Letters (CFLs), County Fiscal Information Notices (CFIN), and Notice Of Forms Changes (GEN 127s). A red text box advises users to sign up for subscriptions to receive these notices. Below this, there is a section for 'Other Letters and Correspondence' with links to Individual County Letters, Federal Funding Provisions, and a County Letter Flow Chart. A note states that the letters and notices are in Adobe Portable Document Format (PDF). The 'Contact Us' section provides the address of the California Department of Social Services, Forms Management Unit, and an email address: fmudss@dss.ca.gov. On the right side, there is a 'Sign up for Subscriptions' form. The form has a title 'Sign up for Subscriptions' and a section for 'Select Letter Type' with checkboxes for ALL LETTERS AND NOTICES, ACIN, ACL, ACWDL, CFL, CFIN, and GEN 127s. Below this is a 'Select Program(s)' section with three sub-sections: 'Adult Programs', 'Cash Aid and Food Assistance Programs', and 'Child Welfare Programs'. Each sub-section has a checked checkbox for 'None (uncheck to select programs.)'. At the bottom of the form are three input fields for 'Email Address', 'First Name', and 'Last Name'.

- [Register to receive Important notices](#)
- <http://www.cdss.ca.gov/inforesources/Letters-and-Notices>

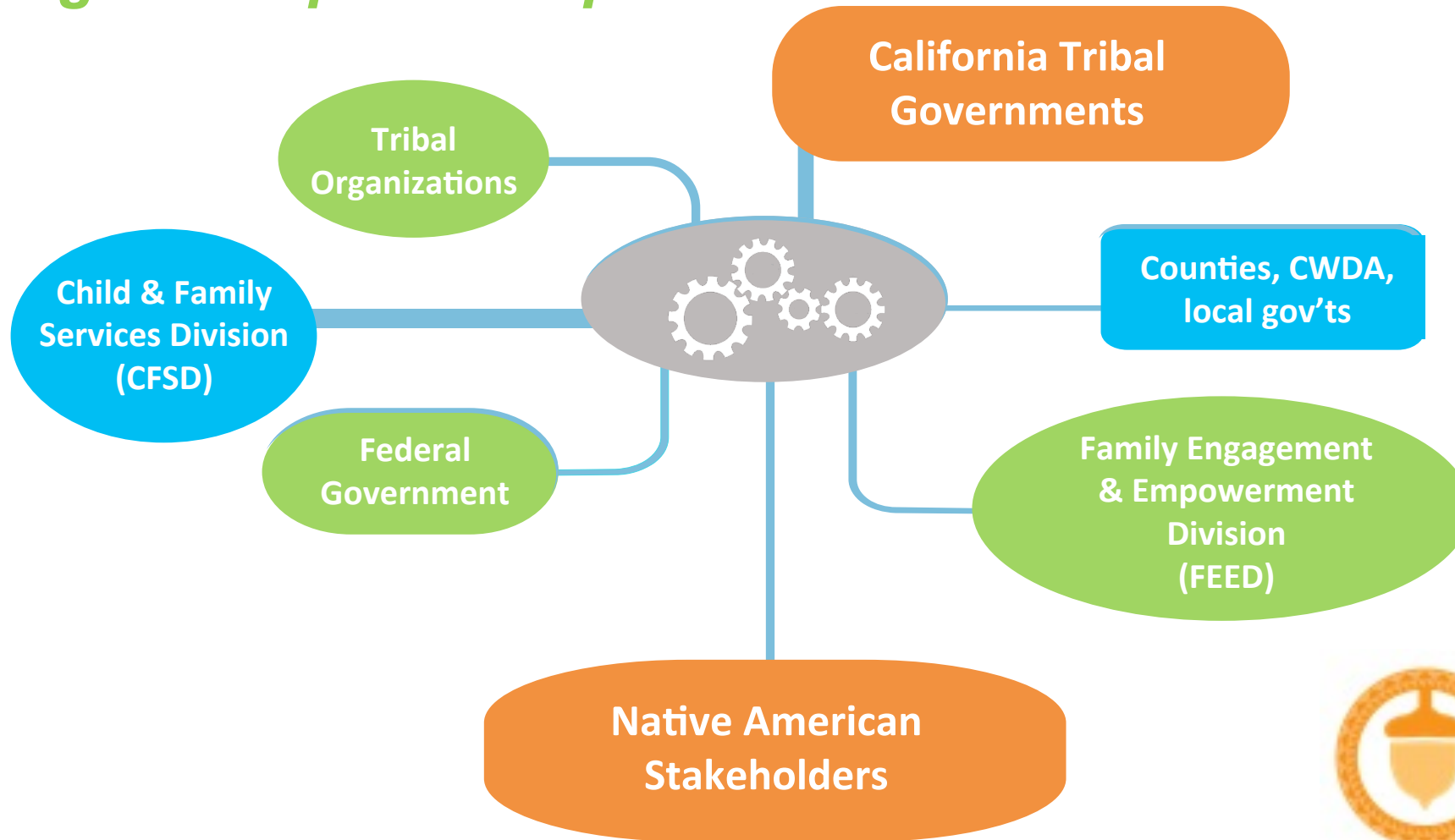
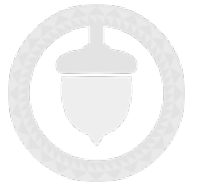
# Tribal Consultation on Division 31-100 Regulations





# Tribal Engagement Strategy Phase 2

*Working together in partnership*



# What's Next: OTA Engagement

- Tribal Advisory Committee
- Stakeholder Meetings
- Webinars & Conference Calls
- Email listserves
- Quarterly Newsletter
- Website





## How to Contact Us:

- Office of Tribal Affairs Phone: (916)654-1217
- Office Tribal Affairs Email: [tribalaffairs@dss.ca.gov](mailto:tribalaffairs@dss.ca.gov)
- Office of Tribal Affairs Website: [www.cdss.ca.gov/inforesources/Tribal-Affairs](http://www.cdss.ca.gov/inforesources/Tribal-Affairs)